



Butler County Regional Transit Authority

Organizational Overview and Oxford Local Services





TOPIC OVERVIEW

- Who is BCRTA?
- What is BCRTA's Mission
- What does BCRTA do?
- Are there discounts?
- How is BCRTA funded?
- How do I influence transit decision-making to meet my community's needs?





Who is **BCRTA** ?

- BCRTA is a political subdivision of the State of Ohio ...
- BCRTA was created by the Butler County Commissioners in 1994 as a public agency in accordance with Ohio Revised Code, Chapter 306 to be governed by a nine-member Board of Trustees appointed by the Butler County Commissioners



What is **BCRTA** 's Mission?

“To support Butler county’s
quality of life & economic
development through
public transportation
solutions.”



County-Wide Services Offered by **BCRTA**



- General Public Demand Response
- Regional Commuter Bus (R routes)
- Local Fixed Route (U routes)
- ADA Demand Response



General Public Demand-Response



- Provided “curb-to-curb”
- Make a reservation in advance
- Prices range from \$15 - \$30 per trip
- Fairfield/Hamilton \$5 trips; 10 AM – 1:30 PM Mon-Fri
- Weekdays 6 AM – 11 PM



Regional Commuter (R)



- R1 – Hamilton/Middletown Shuttle
- R2 – Oxford/Middletown Shuttle
- R3 – Hamilton/Oxford Connector
- R4 – Tri-County Shuttle
- *R6 – Job Connector (Coming in APRIL!!!)*
- \$2.00 per trip
- FREE TRANSFERS!
- Weekdays ≈ 6 AM – 8 PM



Media Coverage

- <http://www.journal-news.com/news/news/local/new-shuttle-route-would-take-workers-from-hamilton/nphZn/>



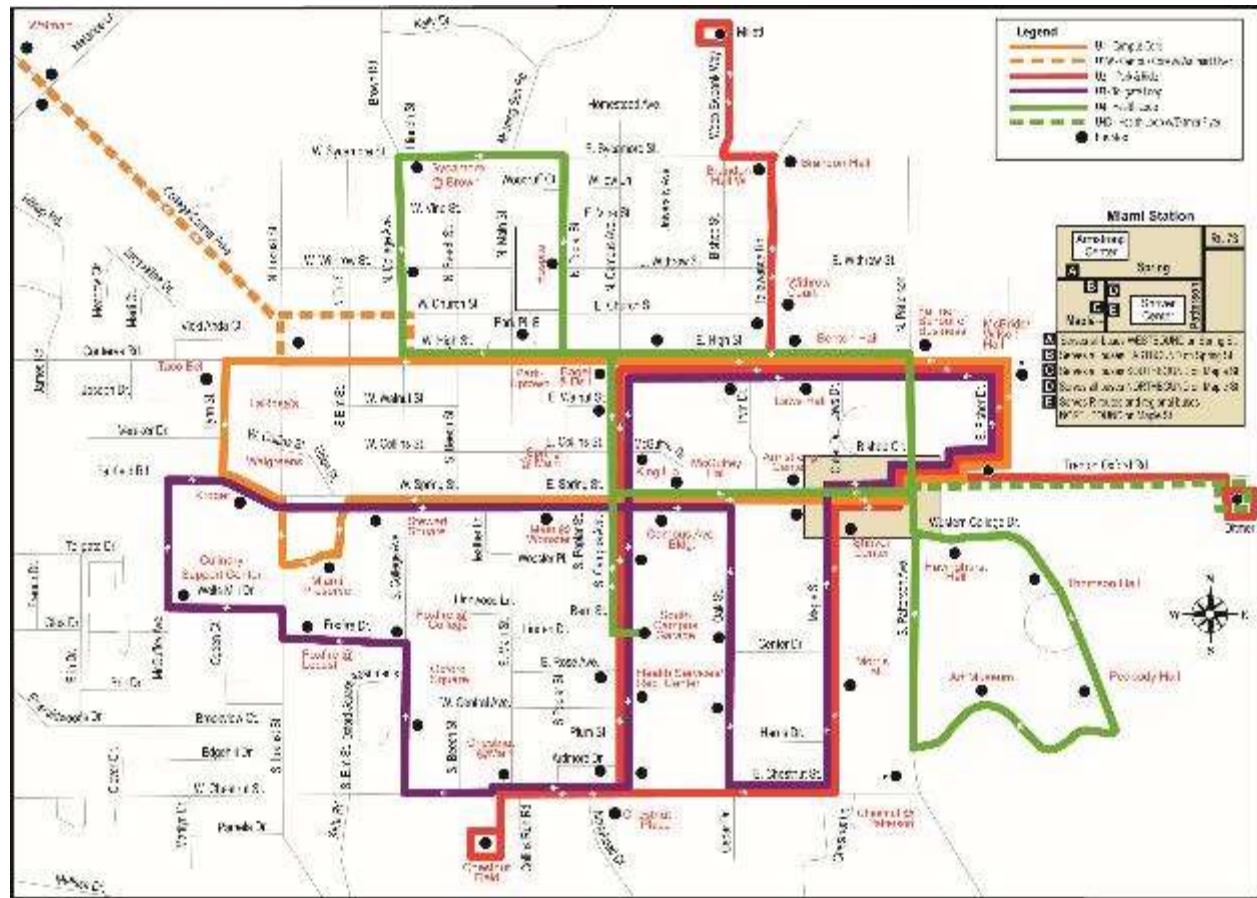
Local Fixed Routes (U)



- U1 – Campus Core
- U1W – Campus Core w/Wal-Mart Flyer
- U2 – Park & Ride
- U3 – Tollgate Loop
- U4 – Health Loop
- U4D – Health Loop w/Ditmer Flyer
- FREE TRANSFERS!
- Mon-Sun, times vary by route



U-Route Composite Map





Middletown Transit Service

- Blue Line
- Green Line
- Gold Line
- Red Line





MTS Route Map

- http://www.cityofmiddletown.org/docs/transit/route_map_2012.pdf



Half-Fare Program



- Riders may pay half the normal fare on U or R routes if over the age of 65 or if they have trouble:
 - Getting on or off standard bus
 - Standing in a moving bus
 - Reading informational signs
 - Hearing directions of the bus driver
 - Understanding Signs or directions of the bus driver
- Riders must apply to be part of this program.



DID YOU KNOW?

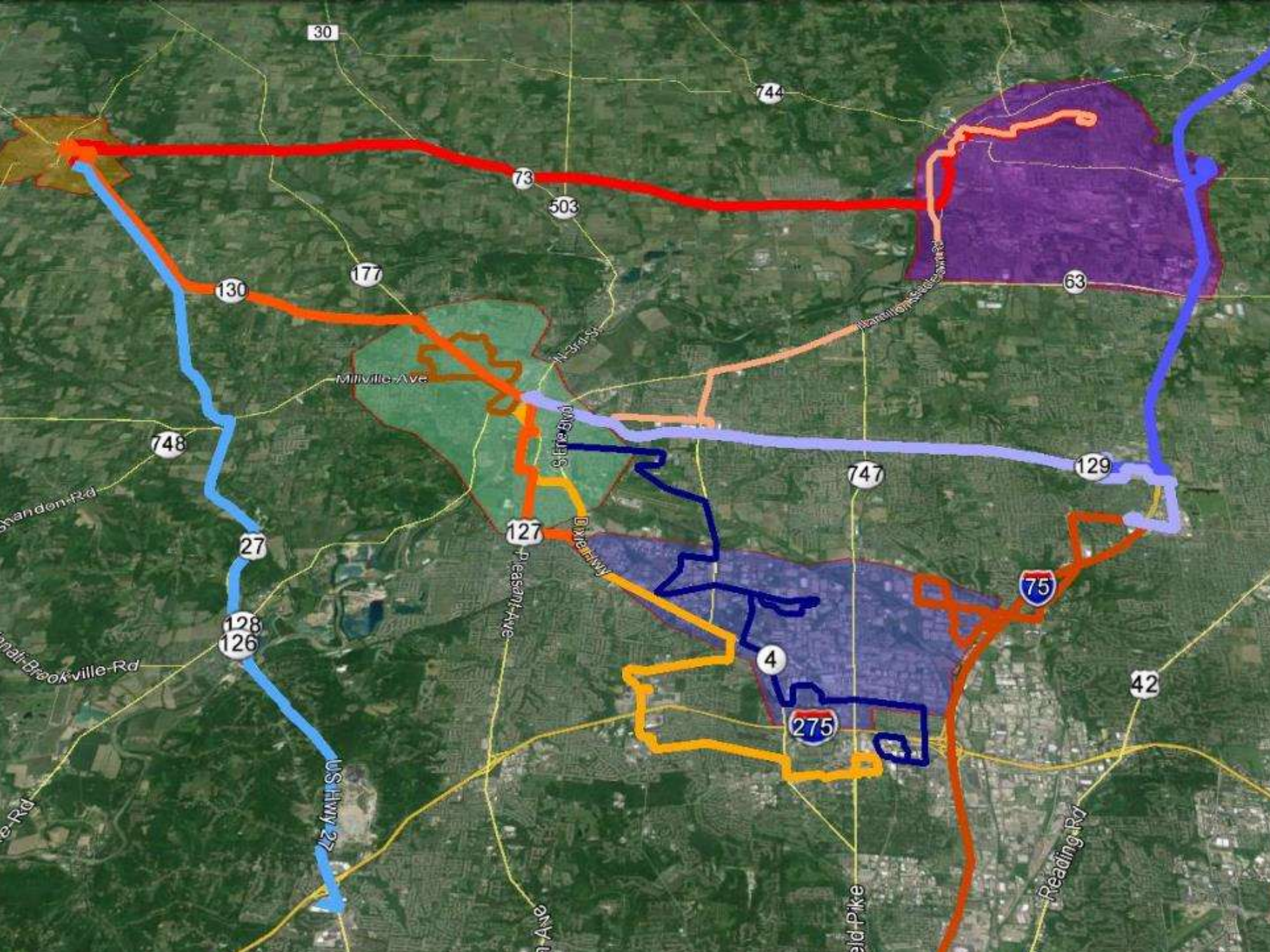
Passenger fares only provide about **15%** of the funding required to provide public transit!





How is Transit Funded?

- BCRTA receives MINIMAL local funding from Butler County!
- Portions of R6 will be funded by Hamilton and Butler Co. CDBG funds
- Miami University
- The City of Middletown
- BCDD
- Federal Grants ≈\$1.2M





How Can YOU influence decisions?

- Public participation is required for BCRTA planning by federal regulation.
 - Watch the paper, Twitter, and Facebook
- Support funding for public transit
 - Community partnerships
 - County partnerships
 - Municipal partnerships





Contact US!

- Office Hours are Weekdays 8AM - 5PM
 - 513.785.5237 or 1.855.42.BCRTA
- Email: request@butlercountyrta.com
-  www.twitter.com/BCRTA
-  www.facebook.com/butlercountyrta

Connor Briggs, Director of Transit Operations
513.785.5394
briggsc@butlercountyrta.com